

SERVICES (ENGLISH UNITS)

MARK	UTILITY	PRESS.	SIZE	FLOW (LBS/HR)	LEVEL
1	FURNACE EXHAUST	-	3X 96.5	2500 CFM	105
2	TUBE EXHAUST	5" H ₂ O	Ø 8.0	500 CFM	104
3	GAS CABINET EXHAUST	5" H ₂ O	2X Ø 6.0	500 CFM	104
4	SCAVENGER EXHAUST CLEAN AIR SUPPLY	2.0" H ₂ O	Ø 6.0	400 CFM	107
5	WATER HEAT EXCH. INLET	40-80 PSI	50 WPT	4 GPM	103
6	WATER HEAT EXCH. OUTLET	40-80 PSI	50 WPT	4 GPM	97
7	COOLING AIR	80 PSI	3/8 SWG	1/8 CFM	103
8	RAIN TUBE FLOOR SHEET	-	2.5 TB	1 GPM	4
9	EXHAUST FAN	-	2.5 TB	1 GPM	5
10	EXHAUST FAN	-	2.5 TB	1 GPM	5
11	EXHAUST FAN	-	2.5 TB	1 GPM	5
12	EXHAUST FAN	-	2.5 TB	1 GPM	5
13	EXHAUST FAN	-	2.5 TB	1 GPM	5
14	EXHAUST FAN	-	2.5 TB	1 GPM	5
15	EXHAUST FAN	-	2.5 TB	1 GPM	5
16	EXHAUST FAN	-	2.5 TB	1 GPM	5
17	EXHAUST FAN	-	2.5 TB	1 GPM	5
18	EXHAUST FAN	-	2.5 TB	1 GPM	5
19	EXHAUST FAN	-	2.5 TB	1 GPM	5
20	EXHAUST FAN	-	2.5 TB	1 GPM	5
21	EXHAUST FAN	-	2.5 TB	1 GPM	5
22	EXHAUST FAN	-	2.5 TB	1 GPM	5
23	EXHAUST FAN	-	2.5 TB	1 GPM	5
24	EXHAUST FAN	-	2.5 TB	1 GPM	5
25	EXHAUST FAN	-	2.5 TB	1 GPM	5
26	EXHAUST FAN	-	2.5 TB	1 GPM	5
27	EXHAUST FAN	-	2.5 TB	1 GPM	5
28	EXHAUST FAN	-	2.5 TB	1 GPM	5
29	EXHAUST FAN	-	2.5 TB	1 GPM	5
30	EXHAUST FAN	-	2.5 TB	1 GPM	5
31	EXHAUST FAN	-	2.5 TB	1 GPM	5
32	EXHAUST FAN	-	2.5 TB	1 GPM	5
33	EXHAUST FAN	-	2.5 TB	1 GPM	5
34	EXHAUST FAN	-	2.5 TB	1 GPM	5

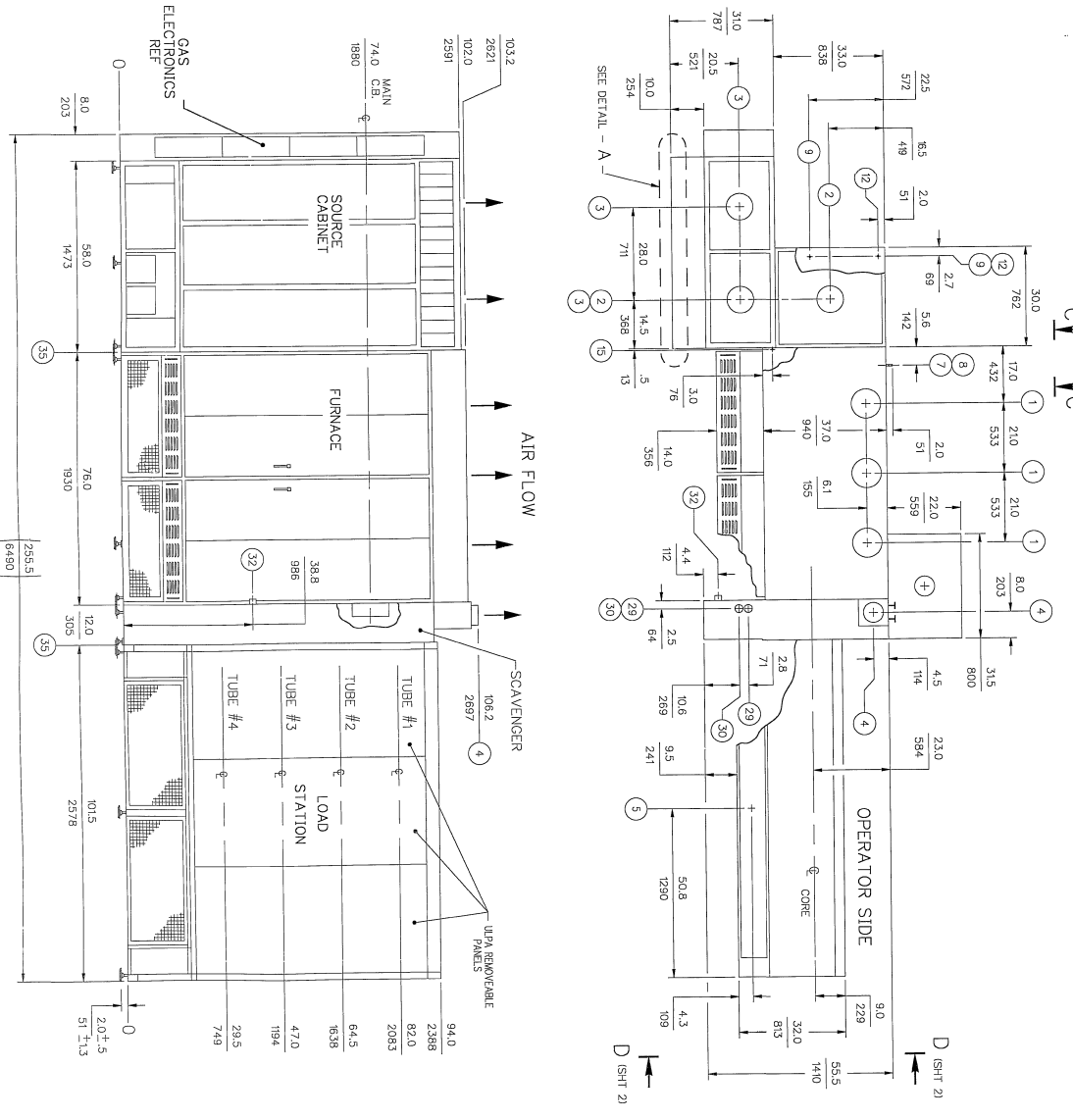
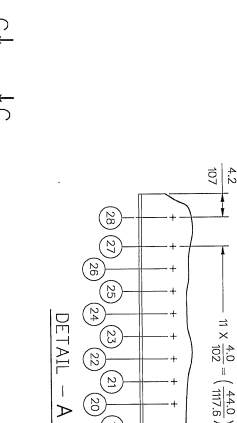
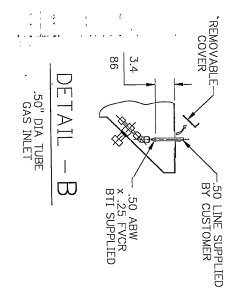
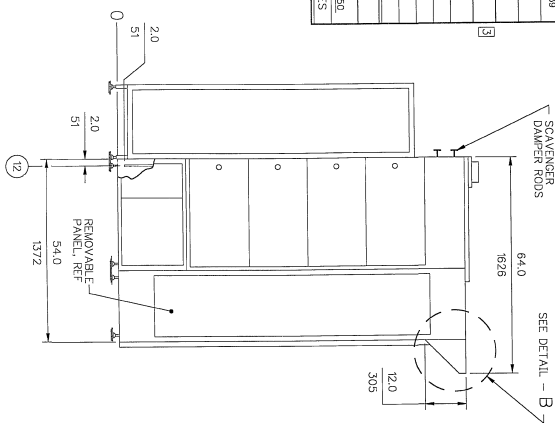
SECTION	HEIGHT	WIDTH
FURNACE	170	60
LOAD STATION	98	36
SOURCE CABINET	96	68

MAXIMUM PROCESSING TEMPERATURE °C	TUBE NO.
1 1250	2 2350
3 1250	4 1250

TECHNOLOGIES INTERNATIONAL, INC.
 MODEL: BPT-41
 EQUIPMENT NO.: DSAI-3
 DATE: 3/80
 VOL: 274 PH: 3
 AMP: 50 HZ KW: 155 KVA
 MAIN CIRCUIT BREAKER IS 350 AMPS
 IAP = MAXIMUM CALCULATED LINE CURRENT
 IAW = MAXIMUM CALCULATED POWER IN KVA

NOTES:

- DIMENSIONS ARE GIVEN AS MIN.
- MAIN POWER FEED IS A 3 PHASE AND GROUND CONNECTION (L1, L2, L3, U0) TO BE MADE FROM CEILING UPS PANEL 220V SOURCE ISN.
- MINIMUM WALL OPENING DOES NOT INCLUDE CLEARANCE FOR PIPES FROM BOTTOM FRAME (SEE 10 HEIGHTS).
- ELEV. = ELEVATION FROM FLOOR (FINISH).
- FACILITY CONNECTION NOT REQUIRED.
- H₂O REGULATION AND OVERPRESSURE BYPASS ARE FACILITY RESIDENT.
- FLOW LISTED ARE DRAIN LINE CAPACITIES IN THE EVENT OF A FLOOD LEAK.
- TORCH COOLING AIR REGULATION IS FACILITY RESIDENT.
- THIS IS A RIGHT HANDED SYSTEM COMPPOSED OF A RIGHT HAND FURNACE, SCAVENGER, AND SOURCE CABINET.



NO.	REV.	DATE	BY	CHKD.	DESCRIPTION
1		3/80			ISSUED FOR PERMITTING
2		3/80			ISSUED FOR PERMITTING
3		3/80			ISSUED FOR PERMITTING
4		3/80			ISSUED FOR PERMITTING
5		3/80			ISSUED FOR PERMITTING
6		3/80			ISSUED FOR PERMITTING
7		3/80			ISSUED FOR PERMITTING
8		3/80			ISSUED FOR PERMITTING
9		3/80			ISSUED FOR PERMITTING
10		3/80			ISSUED FOR PERMITTING
11		3/80			ISSUED FOR PERMITTING
12		3/80			ISSUED FOR PERMITTING
13		3/80			ISSUED FOR PERMITTING
14		3/80			ISSUED FOR PERMITTING
15		3/80			ISSUED FOR PERMITTING
16		3/80			ISSUED FOR PERMITTING
17		3/80			ISSUED FOR PERMITTING
18		3/80			ISSUED FOR PERMITTING
19		3/80			ISSUED FOR PERMITTING
20		3/80			ISSUED FOR PERMITTING
21		3/80			ISSUED FOR PERMITTING
22		3/80			ISSUED FOR PERMITTING
23		3/80			ISSUED FOR PERMITTING
24		3/80			ISSUED FOR PERMITTING
25		3/80			ISSUED FOR PERMITTING
26		3/80			ISSUED FOR PERMITTING
27		3/80			ISSUED FOR PERMITTING
28		3/80			ISSUED FOR PERMITTING
29		3/80			ISSUED FOR PERMITTING
30		3/80			ISSUED FOR PERMITTING
31		3/80			ISSUED FOR PERMITTING
32		3/80			ISSUED FOR PERMITTING
33		3/80			ISSUED FOR PERMITTING
34		3/80			ISSUED FOR PERMITTING
35		3/80			ISSUED FOR PERMITTING

