

SERVICES (ENGLISH UNITS)

MK	UTILITY	PRESS.	SIZE	FLOW	ELEV.
1	FURNACE EXHAUST	-	3X 6H.5	2500 CFM	103
2	TUBE FORTER	5" H ₂ O	Ø 6.0	500 CFM	104
3	GAS CABINET	5" H ₂ O	2X Ø 6.0	500 CFM	104
4	SCAVENGER	2.0" H ₂ O	Ø 6.0	400 CFM	107
5	FLOWMETER, CLEAN AIR SUPPLY	1.25" H ₂ O	1/2" X 6.81	5000 CFM	98
6	WATER LEAK EXCH. INLET	40-80 PSI	50 MPF	4.0 PM	103
7	TORCH COOLING AIR TUBE FORTER	60 PSI	3/8 SWG	4.0 PM	97
8	TORCH COOLING AIR TUBE FORTER	60 PSI	3/8 SWG	4.0 PM	103
9	DRAIN TUBE FORTER SHELF	-	2.5 TB	1.0 PM	4
10	DRAIN TUBE FORTER SHELF	-	2.5 TB	1.0 PM	4
11	DRAIN TUBE FORTER SHELF	-	2.5 TB	1.0 PM	4
12	DRAIN TUBE FORTER SHELF	-	2.5 TB	1.0 PM	4
13	DRAIN TUBE FORTER SHELF	-	2.5 TB	1.0 PM	4
14	DRAIN TUBE FORTER SHELF	-	2.5 TB	1.0 PM	4
15	DRAIN TUBE FORTER SHELF	-	2.5 TB	1.0 PM	4
16	DRAIN TUBE FORTER SHELF	-	2.5 TB	1.0 PM	4
17	DRAIN TUBE FORTER SHELF	-	2.5 TB	1.0 PM	4
18	DRAIN TUBE FORTER SHELF	-	2.5 TB	1.0 PM	4
19	DRAIN TUBE FORTER SHELF	-	2.5 TB	1.0 PM	4
20	DRAIN TUBE FORTER SHELF	-	2.5 TB	1.0 PM	4
21	DRAIN TUBE FORTER SHELF	-	2.5 TB	1.0 PM	4
22	DRAIN TUBE FORTER SHELF	-	2.5 TB	1.0 PM	4
23	DRAIN TUBE FORTER SHELF	-	2.5 TB	1.0 PM	4
24	DRAIN TUBE FORTER SHELF	-	2.5 TB	1.0 PM	4
25	DRAIN TUBE FORTER SHELF	-	2.5 TB	1.0 PM	4
26	DRAIN TUBE FORTER SHELF	-	2.5 TB	1.0 PM	4
27	DRAIN TUBE FORTER SHELF	-	2.5 TB	1.0 PM	4
28	DRAIN TUBE FORTER SHELF	-	2.5 TB	1.0 PM	4
29	DRAIN TUBE FORTER SHELF	-	2.5 TB	1.0 PM	4
30	DRAIN TUBE FORTER SHELF	-	2.5 TB	1.0 PM	4
31	DRAIN TUBE FORTER SHELF	-	2.5 TB	1.0 PM	4
32	DRAIN TUBE FORTER SHELF	-	2.5 TB	1.0 PM	4
33	DRAIN TUBE FORTER SHELF	-	2.5 TB	1.0 PM	4
34	DRAIN TUBE FORTER SHELF	-	2.5 TB	1.0 PM	4
35	DRAIN TUBE FORTER SHELF	-	2.5 TB	1.0 PM	4
36	DRAIN TUBE FORTER SHELF	-	2.5 TB	1.0 PM	4
37	DRAIN TUBE FORTER SHELF	-	2.5 TB	1.0 PM	4
38	DRAIN TUBE FORTER SHELF	-	2.5 TB	1.0 PM	4
39	DRAIN TUBE FORTER SHELF	-	2.5 TB	1.0 PM	4

MINIMUM WALL OPENINGS

SECTION	HEIGHT	WIDTH
FURNACE	110	60
LOAD STATION	89	38
SOURCE CABINET	108	68

ELECTRICAL

MAXIMUM PROCESSING TEMPERATURE °C: 1 2590 2 1260 3 2590 4 2590

FURNACE CASE MUST BE GROUNDED PER LOCAL CODES

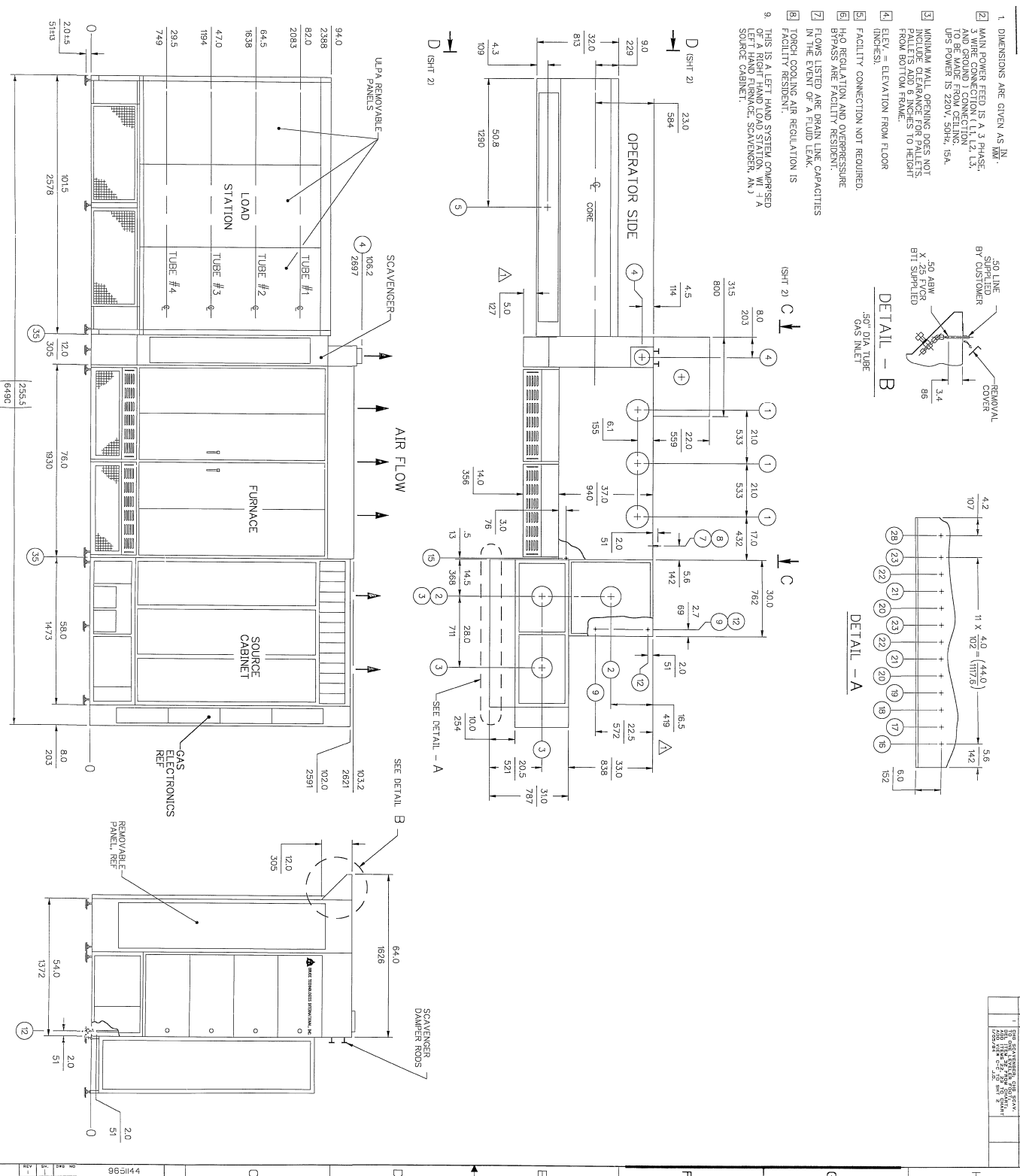
BRICE CALORIES INTERNATIONAL, INC.
 10000 W. 10TH AVENUE, SUITE 100
 DENVER, CO 80231
 TEL: 303.751.1000
 FAX: 303.751.1001
 WWW: WWW.BRICECALORIES.COM

MODEL: BDF-41
 EQUIPMENT NO.: DSAL-4
 DATE: _____
 VOL.1: 274 PH: 3
 AMP: 274 KW: 158 KVA
 HZ: 50 HZ

MAIN CIRCUIT BREAKER IS 350 AMP
 AMP: = MAXIMUM CALCULATED LINE CURRENT
 KW: = MAXIMUM CALCULATED POWER IN KVA

NOTES:

- DIMENSIONS ARE GIVEN AS IN.
- MAIN POWER FEED IS A 3 PHASE-4 WIRE SYSTEM. ALL CONNECTIONS TO BE MADE FROM CEILING. UPS POWER IS 220V, 50HZ, 15A.
- MINIMUM WALL OPENING DOES NOT INCLUDE CLEARANCE FOR PALLETS. PALLETS ADD 6 INCHES TO HEIGHT FROM BOTTOM FRAME.
- ELEV. = ELEVATION FROM FLOOR (INCHES).
- FACILITY CONNECTION NOT REQUIRED.
- H₂O REGULATION AND OVERPRESSURE BYPASS ARE FACILITY RESIDENT.
- FLUWS LISTED ARE BRAIN LINE CAPACITIES IN THE EVENT OF A FLUID LEAK FACILITY RESIDENT.
- TORCH COOLING AIR REGULATION IS FACILITY RESIDENT.
- THIS IS A LEFT HAND SYSTEM COMPARED TO A RIGHT HAND LOAD STATION. WIT 1 A LEFT HAND FURNACE, SCAVENGER, AND SOURCE CABINET.



BRICE CALORIES INTERNATIONAL, INC.
 10000 W. 10TH AVENUE, SUITE 100
 DENVER, CO 80231
 TEL: 303.751.1000
 FAX: 303.751.1001
 WWW: WWW.BRICECALORIES.COM

MODEL: BDF-41
 EQUIPMENT NO.: DSAL-4
 DATE: _____
 VOL.1: 274 PH: 3
 AMP: 274 KW: 158 KVA
 HZ: 50 HZ

MAIN CIRCUIT BREAKER IS 350 AMP
 AMP: = MAXIMUM CALCULATED LINE CURRENT
 KW: = MAXIMUM CALCULATED POWER IN KVA

APPROVALS:

DATE	BY	TITLE
12-27-20	[Signature]	DESIGNER
12-27-20	[Signature]	CHECKED
12-27-20	[Signature]	APPROVED

TITLE: INSTALLATION AND FACILITIES DRAWING, DSAL-4, LEFT HAND

SCALE: 1/8" = 1'-0"

PROJECT NO.: 085104

SHEET NO.: 1 OF 2

