

SERVICES (ENGLISH UNITS)

MARK	UTILITY	PRESS.	SIZE	FLOW	ELEV.
1	FORNAGE EXHAUST	-	3X 60S	2500 CFM	103
2	EXHAUST	5" H2O	ø 8.0	500 CFM	104
3	GAS CABINET EXHAUST	5" H2O	2X ø 8.0	500 CFM	104
4	EXHAUST	210" H2O	ø 6.0	400 CFM	107
5	WATER HEAT EXH. OUTLET	49-80 PS	50 WPT	4 GPM	103
6	WATER HEAT EXH. OUTLET	-	50 WPT	4 GPM	97
7	TORON COOLING AIR	60 PSI	3/8 SWG	11 GPM	6
8	DRAIN TUBE EXH. OUTLET	-	25 TB	1 GPM	4
9	EXH. CONDENSATE OAS / PRESSURE	100 PSIG	1/2" TUBE	45 SLM	26.5
10	EXH. CONDENSATE OAS / PRESSURE	100 PSIG	1/2" TUBE	80 SLM	26.5
11	EXH. CONDENSATE OAS / PRESSURE	100 PSIG	1/2" TUBE	80 SLM	26.5
12	EXH. CONDENSATE OAS / PRESSURE	100 PSIG	1/2" TUBE	80 SLM	26.5
13	EXH. CONDENSATE OAS / PRESSURE	100 PSIG	1/2" TUBE	80 SLM	26.5
14	EXH. CONDENSATE OAS / PRESSURE	100 PSIG	1/2" TUBE	80 SLM	26.5
15	EXH. CONDENSATE OAS / PRESSURE	100 PSIG	1/2" TUBE	80 SLM	26.5
16	EXH. CONDENSATE OAS / PRESSURE	100 PSIG	1/2" TUBE	80 SLM	26.5
17	EXH. CONDENSATE OAS / PRESSURE	100 PSIG	1/2" TUBE	80 SLM	26.5
18	EXH. CONDENSATE OAS / PRESSURE	100 PSIG	1/2" TUBE	80 SLM	26.5
19	EXH. CONDENSATE OAS / PRESSURE	100 PSIG	1/2" TUBE	80 SLM	26.5
20	EXH. CONDENSATE OAS / PRESSURE	100 PSIG	1/2" TUBE	80 SLM	26.5
21	EXH. CONDENSATE OAS / PRESSURE	100 PSIG	1/2" TUBE	80 SLM	26.5
22	EXH. CONDENSATE OAS / PRESSURE	100 PSIG	1/2" TUBE	80 SLM	26.5
23	EXH. CONDENSATE OAS / PRESSURE	100 PSIG	1/2" TUBE	80 SLM	26.5
24	EXH. CONDENSATE OAS / PRESSURE	100 PSIG	1/2" TUBE	80 SLM	26.5
25	EXH. CONDENSATE OAS / PRESSURE	100 PSIG	1/2" TUBE	80 SLM	26.5
26	EXH. CONDENSATE OAS / PRESSURE	100 PSIG	1/2" TUBE	80 SLM	26.5
27	EXH. CONDENSATE OAS / PRESSURE	100 PSIG	1/2" TUBE	80 SLM	26.5
28	EXH. CONDENSATE OAS / PRESSURE	100 PSIG	1/2" TUBE	80 SLM	26.5
29	EXH. CONDENSATE OAS / PRESSURE	100 PSIG	1/2" TUBE	80 SLM	26.5
30	EXH. CONDENSATE OAS / PRESSURE	100 PSIG	1/2" TUBE	80 SLM	26.5
31	EXH. CONDENSATE OAS / PRESSURE	100 PSIG	1/2" TUBE	80 SLM	26.5
32	EXH. CONDENSATE OAS / PRESSURE	100 PSIG	1/2" TUBE	80 SLM	26.5
33	EXH. CONDENSATE OAS / PRESSURE	100 PSIG	1/2" TUBE	80 SLM	26.5
34	EXH. CONDENSATE OAS / PRESSURE	100 PSIG	1/2" TUBE	80 SLM	26.5

MINIMUM WALL OPENINGS

SECTION	HEIGHT	WIDTH
FURNACE	10	60
LOAD STATION	58	36
SOURCE CABINET	108	68

ELECTRICAL

MAXIMUM CONTINUOUS PROCESSING TEMP °C: 1 250 2 250 3 250 4 250

TURNING CASE MUST BE GROUNDED PER LOCAL CODES.

BRIDGE TECHNOLOGIES INTERNATIONAL, INC.
 10000 W. 16TH AVENUE, SUITE 100
 DENVER, CO 80202

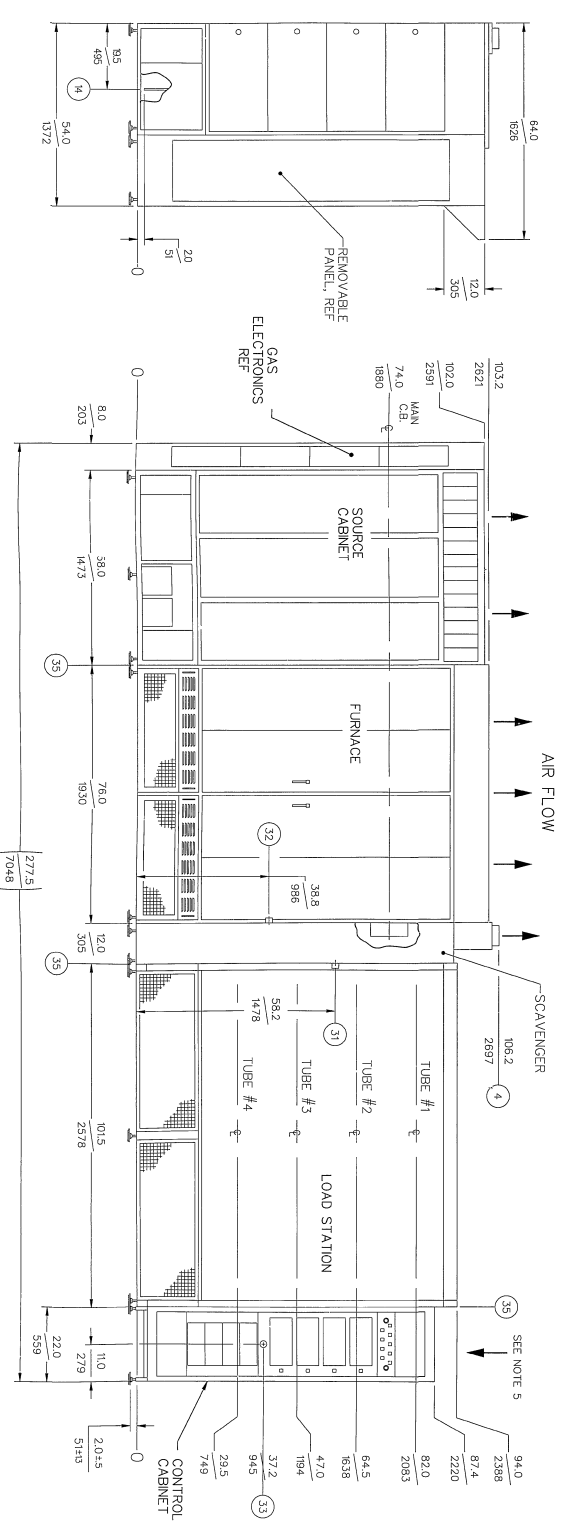
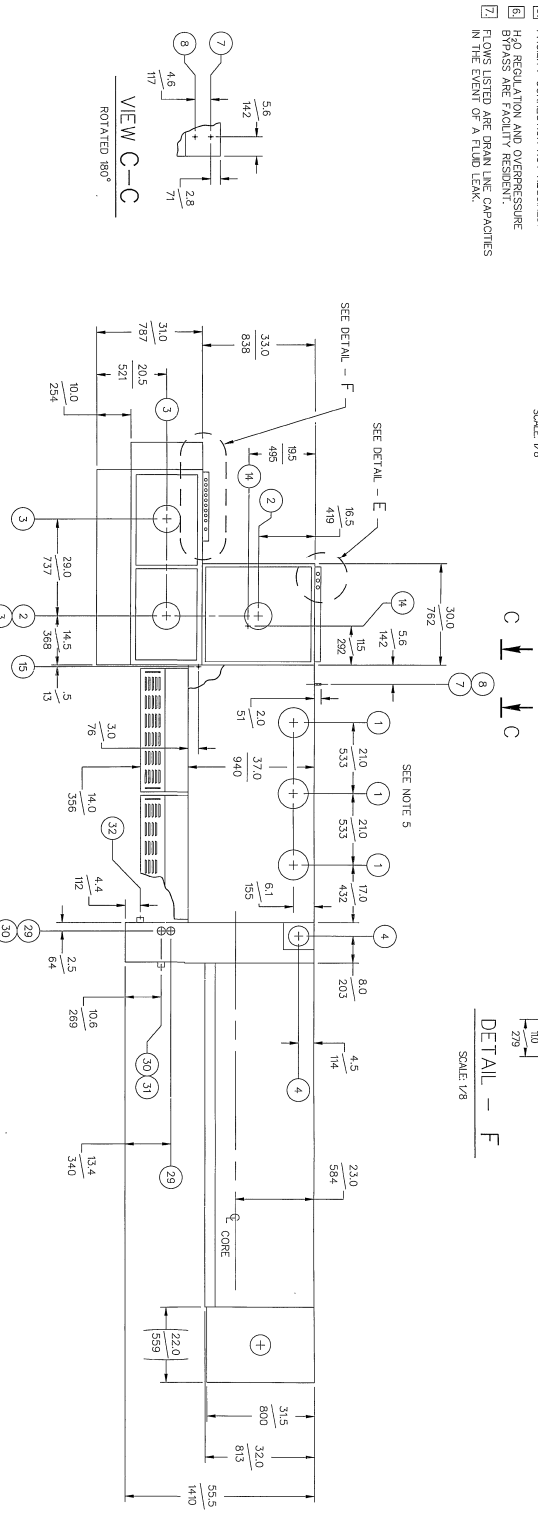
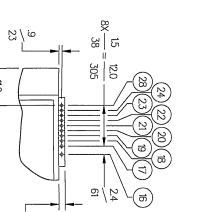
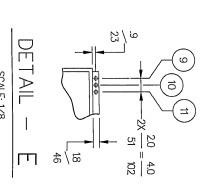
MODEL: BT-41
 EQUIPMENT NO.: DSTC-4
 DATE: _____

VOLT: 480 PH: 3 HZ: 60
 AMP LT: 195 L2: 179 L3: 155
 MAX AMP: 222 KW: 100

1. MAX. CIRCUIT BREAKER IS 250 AMP
 2. MAXIMUM CALCULATED LINE CURRENT
 3. MAXIMUM CALCULATED POWER IN KVA
 4. MAXIMUM CALCULATED CURRENT
 AT MAIN BREAKER

NOTES:

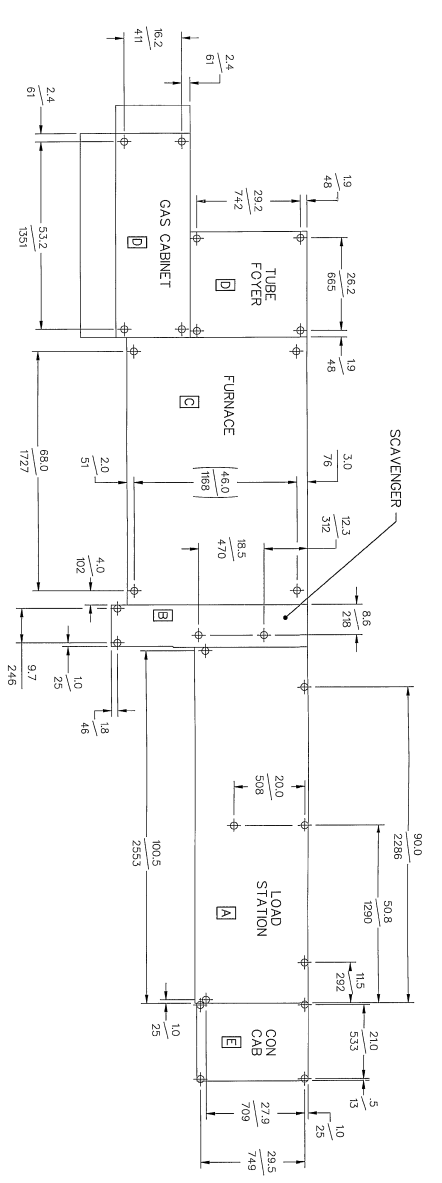
- DIMENSIONS ARE GIVEN AS MIN.
- MAIN POWER FEED IS A 3 PHASE AND GROUND CONNECTION (L1, L2, L3) UPS REQUIRES 120V 60Hz 15A FOR START-UP.
- MINIMUM WALL OPENING DOES NOT INCLUDE CLEARANCE FOR PALLETS FROM BOTTOM FRAME.
- ELEV. = ELEVATION FROM FLOOR FINISH.
- FACILITY CONNECTION NOT REQUIRED.
- H2O REGULATION AND OVERPRESSURE BYPASS ARE FACILITY RESIDENT.
- FLOWS LISTED ARE BRAN LINE CAPACITIES IN THE EVENT OF A FLUID LEAK.



REVISION	DATE	DESCRIPTION
1	1/27/20	ISSUE FOR PERMIT
2	1/27/20	ISSUE FOR PERMIT

BRIDGE TECHNOLOGIES INTERNATIONAL, INC.
 10000 W. 16TH AVENUE, SUITE 100
 DENVER, CO 80202

PROJECT: INSTALLATION AND FACILITIES DRAWING
 DRAWING NO.: DSTC-4
 SHEET: 1 OF 2



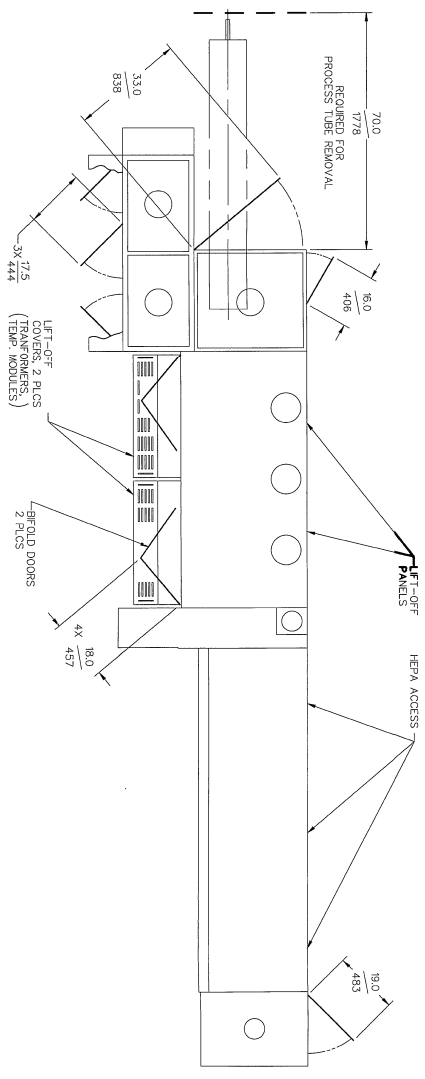
LEVELER DIAMETER

2.0 = SECTIONS B,D & E
 3.0 = SECTIONS A & C

LEGEND

Symbol	Component Name	Height (ft)
D	LOADING STATION	3200
D	SCAVENGER	4500
D	FOYER	2500
D	CONTROL CABINET	1500

**LEVELING LEG LOCATIONS
(POINT LOADING)**



DOOR SWING / COMPONENT ACCESS