

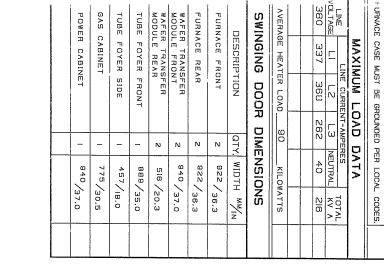
**SERVICES**

NO.	UNIT	QTY	DESCRIPTION	UNIT PRICE	TOTAL
1	MINI	50	RSI	500	25000
2	MINI	50	RSI	500	25000
3	MINI	50	RSI	500	25000
4	MINI	50	RSI	500	25000
5	MINI	50	RSI	500	25000
6	MINI	50	RSI	500	25000
7	MINI	50	RSI	500	25000
8	MINI	50	RSI	500	25000
9	MINI	50	RSI	500	25000
10	MINI	50	RSI	500	25000
11	MINI	50	RSI	500	25000
12	MINI	50	RSI	500	25000
13	MINI	50	RSI	500	25000
14	MINI	50	RSI	500	25000
15	MINI	50	RSI	500	25000
16	MINI	50	RSI	500	25000
17	MINI	50	RSI	500	25000
18	MINI	50	RSI	500	25000
19	MINI	50	RSI	500	25000
20	MINI	50	RSI	500	25000
21	MINI	50	RSI	500	25000
22	MINI	50	RSI	500	25000
23	MINI	50	RSI	500	25000
24	MINI	50	RSI	500	25000
25	MINI	50	RSI	500	25000
26	MINI	50	RSI	500	25000
27	MINI	50	RSI	500	25000
28	MINI	50	RSI	500	25000
29	MINI	50	RSI	500	25000
30	MINI	50	RSI	500	25000
31	MINI	50	RSI	500	25000
32	MINI	50	RSI	500	25000
33	MINI	50	RSI	500	25000
34	MINI	50	RSI	500	25000
35	MINI	50	RSI	500	25000
36	MINI	50	RSI	500	25000
37	MINI	50	RSI	500	25000
38	MINI	50	RSI	500	25000
39	MINI	50	RSI	500	25000
40	MINI	50	RSI	500	25000
41	MINI	50	RSI	500	25000
42	MINI	50	RSI	500	25000
43	MINI	50	RSI	500	25000
44	MINI	50	RSI	500	25000
45	MINI	50	RSI	500	25000
46	MINI	50	RSI	500	25000
47	MINI	50	RSI	500	25000
48	MINI	50	RSI	500	25000
49	MINI	50	RSI	500	25000
50	MINI	50	RSI	500	25000

**ELECTRICAL**  
 MAX. TEMPERATURE 110.0 °C (230.0 °F)  
 MIN. TEMPERATURE 20.0 °C (68.0 °F)  
 WATTAGE 20000 W (20.0 KW)  
 PHASES 3  
 VOLTAGE 480 V (L-L), 277 V (L-N)  
 UPS POWER 50 KW  
 SINGLE PHASE 50 KW  
 THREE PHASE 50 KW

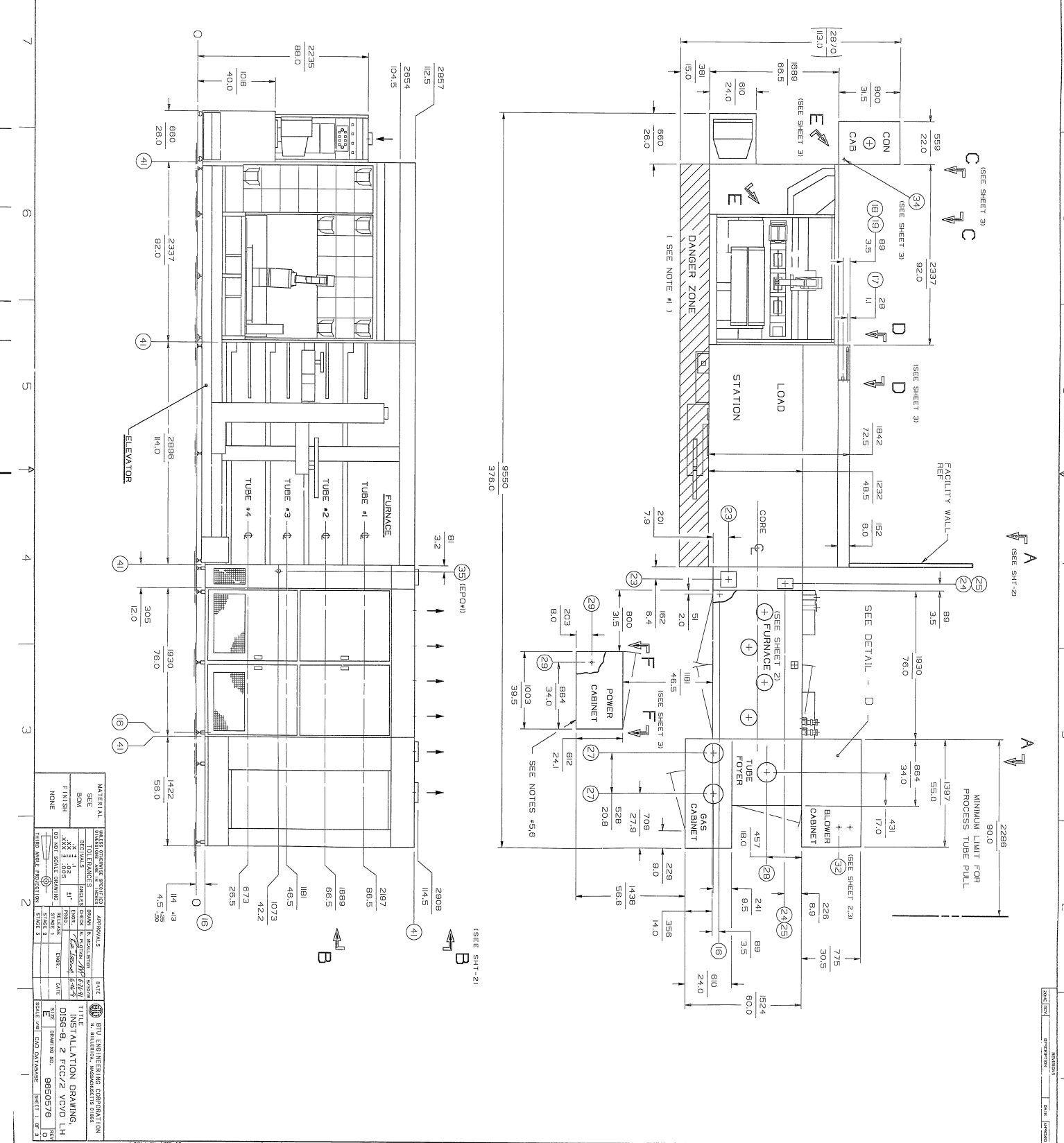
**MAXIMUM LOAD DATA**  
 LINE TYPE CURRENT AMPS TOTAL  
 300 337 360 410  
 350 337 360 410

**SWINGING DOOR DIMENSIONS**  
 DESCRIPTION QTY WIDTH W/H  
 FINISHED FRONT 2 2927/2803  
 FINISHED REAR 2 2927/2803  
 WATER TRANSFER 2 2927/2803  
 WATER TRANSFER 2 2927/2803  
 TUBS FOR REAR 1 2927/2803  
 TUBS FOR FRONT 1 2927/2803  
 TUBE COVER SIDE 1 2927/2803  
 GAS CABINET 1 2927/2803  
 POWER CABINET 1 2927/2803



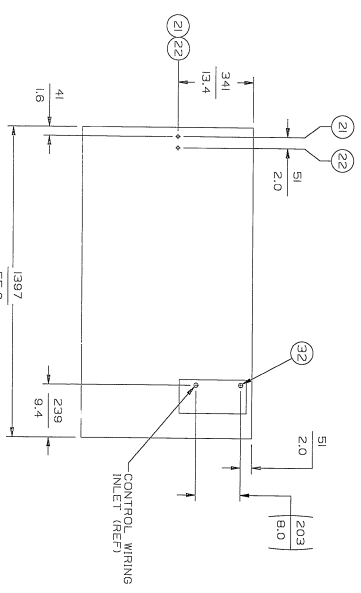
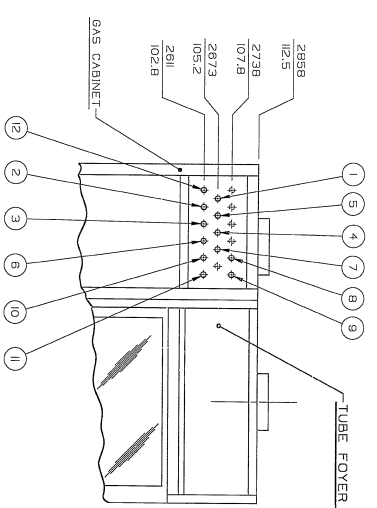
**MATERIAL**

ITEM NO.	DESCRIPTION	QTY	UNIT	PRICE	TOTAL
1	STEEL	100	LB	1.00	100.00
2	BRASS	50	LB	2.00	100.00
3	COPPER	25	LB	4.00	100.00
4	ALUMINUM	100	LB	1.00	100.00
5	ZINC	50	LB	2.00	100.00
6	PAINT	10	GA	10.00	100.00
7	GLASS	50	EA	2.00	100.00
8	WOOD	100	EA	1.00	100.00
9	PLASTER	100	EA	1.00	100.00
10	CEMENT	100	EA	1.00	100.00

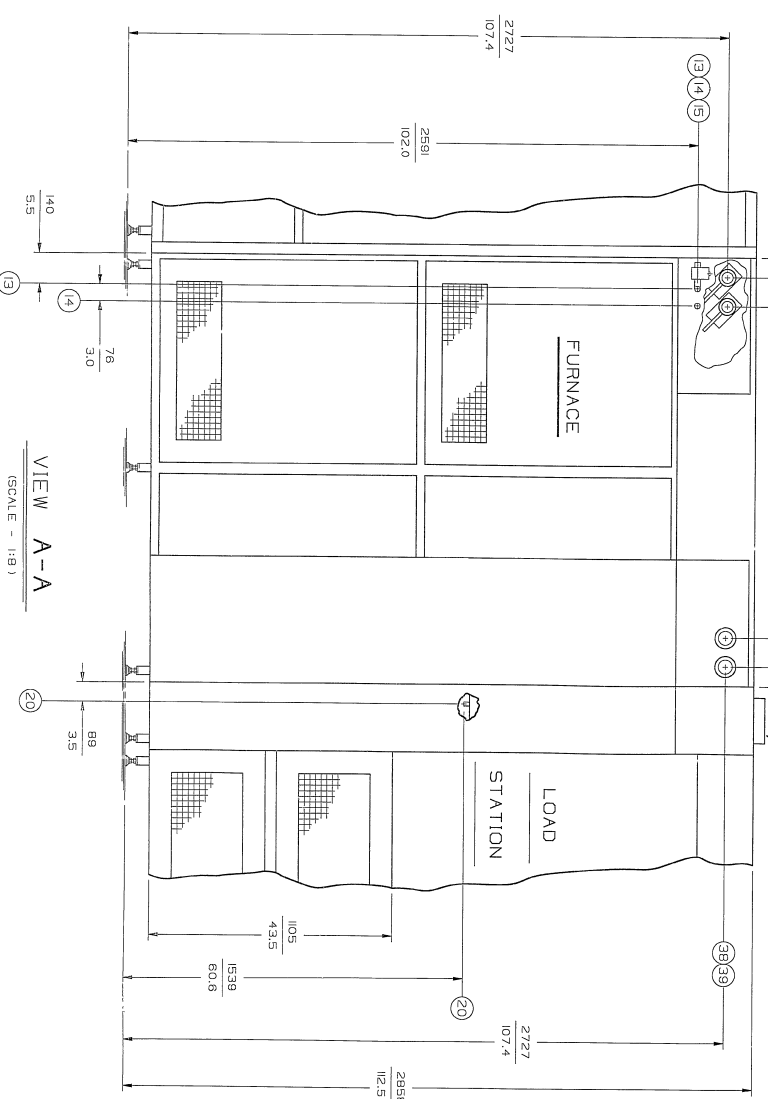
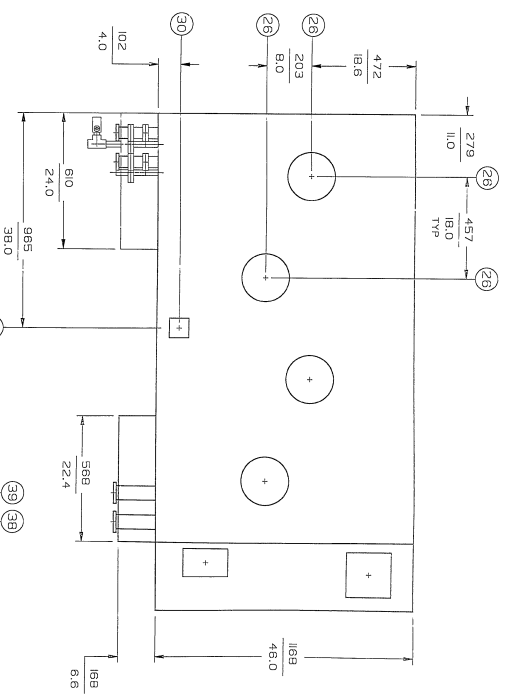


**NOTES:**

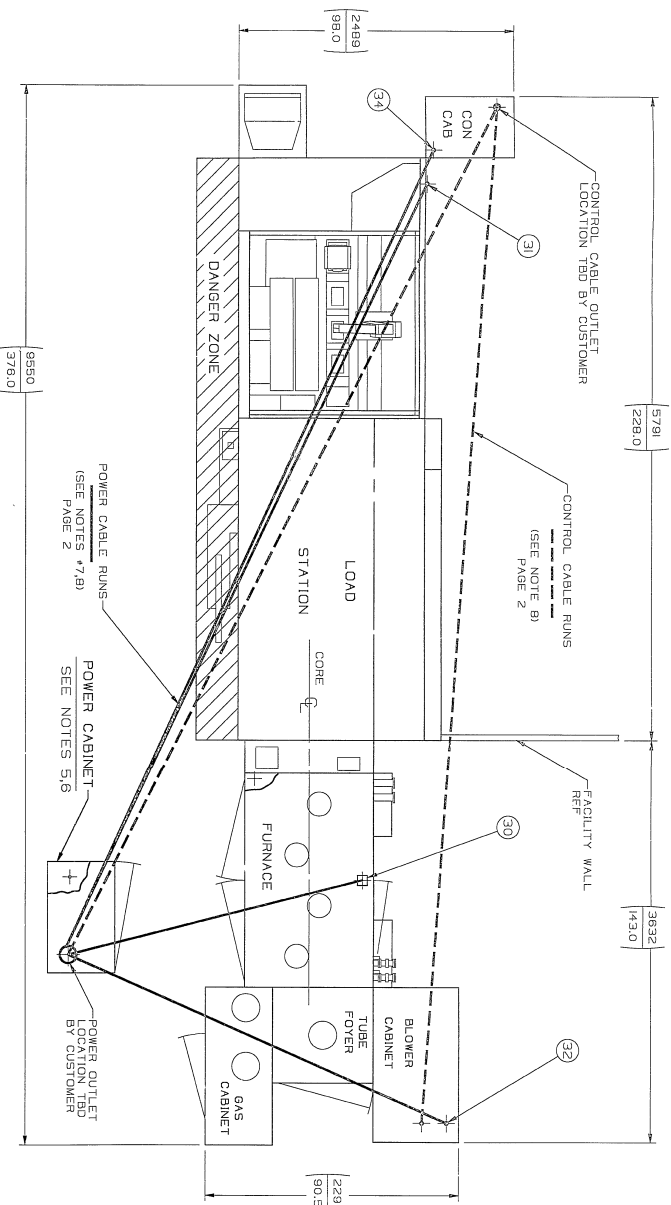
1. THIS AREA MUST BE KEPT CLEAR TO ALLOW ELEVATOR TO TRANSVERSE WHEN IN RETRACTED POSITION.
2. DIMENSIONS ARE GIVEN AS MM.
3. THE ABBREVIATION A.F.F. IN THE SERVICE TABLE = ALTITUDE FROM FLOOR, DIMENSIONS GIVEN IN MM.
4. MATING HALVES TO THESE CONNECTIONS ARE SUPPLIED.
5. POWER CABINET IS 2490 A.F.F.
6. BOTH 380V 3Ø AND 220V 1Ø POWER ARE TO BE SUPPLIED BY CUSTOMER AT THIS LOCATION.
7. POWER FEED IS BY WAY OF OVERHEAD CONDUIT, AND PROVIDED FROM SYSTEM POWER CABINET.
8. CONDUIT RUNS ARE REQUIRED AT THESE LOCATIONS AND ARE CUSTOMER RESPONSIBILITY.
9. EXPECTED EXHAUST TEMPERATURES ARE 400°C MAX.
10. MINIMUM WALL OPENINGS ARE BASED ON SMALLEST COMPONENT DIMENSIONS OF SUB SECTIONS DISASSEMBLED PER HEIGHT CLEARANCES OF 102MM FOR WIDTH AND 152MM FOR HEIGHT CLEARANCES OF 102MM FOR WIDTH AND 152MM FOR HEIGHT CLEARANCES OF 102MM FOR WIDTH AND 152MM FOR HEIGHT FACTORY IMMEDIATELY IF ANY PROBLEMS ARE NOTED.



PLAN VIEW CVD AND FCC BLOWER CABINET



VIEW A-A (SCALE - 1:8) (ROTATED 180°)



POWER AND CONTROL CABLING

